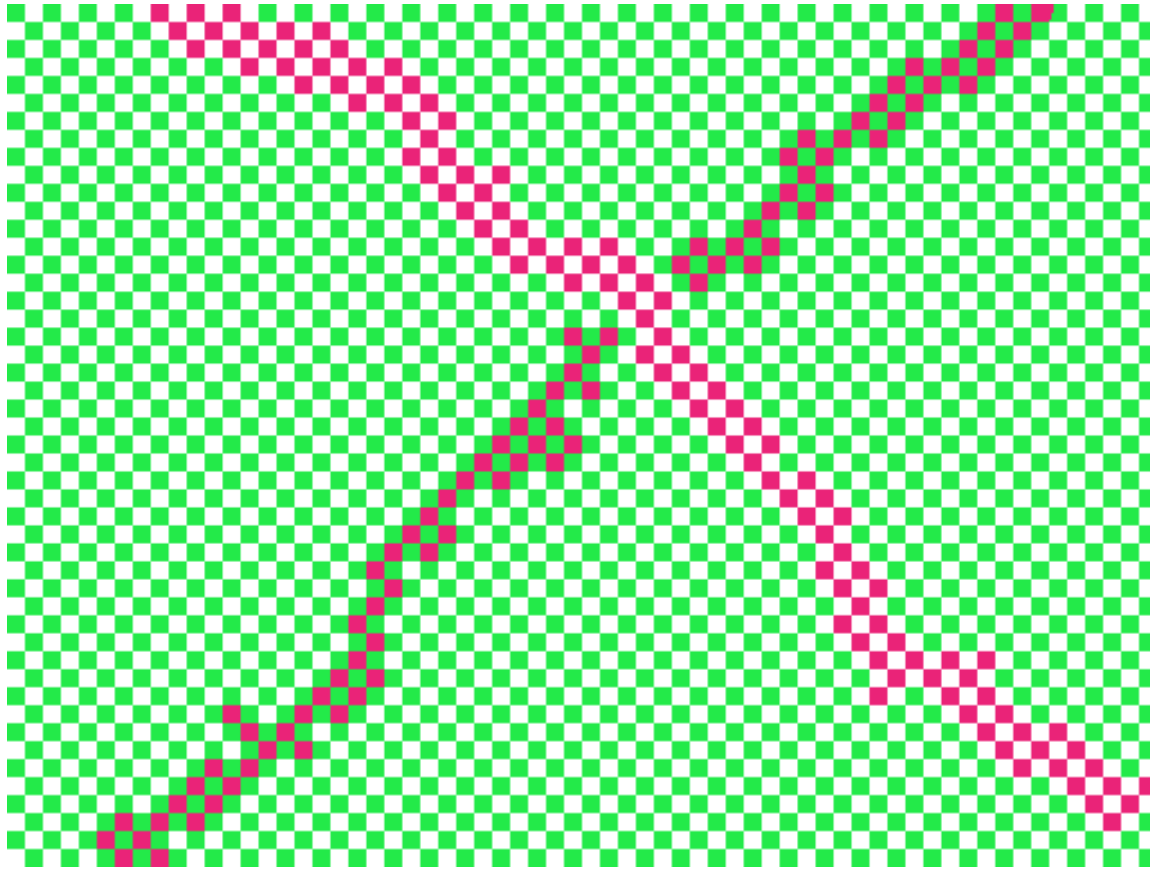




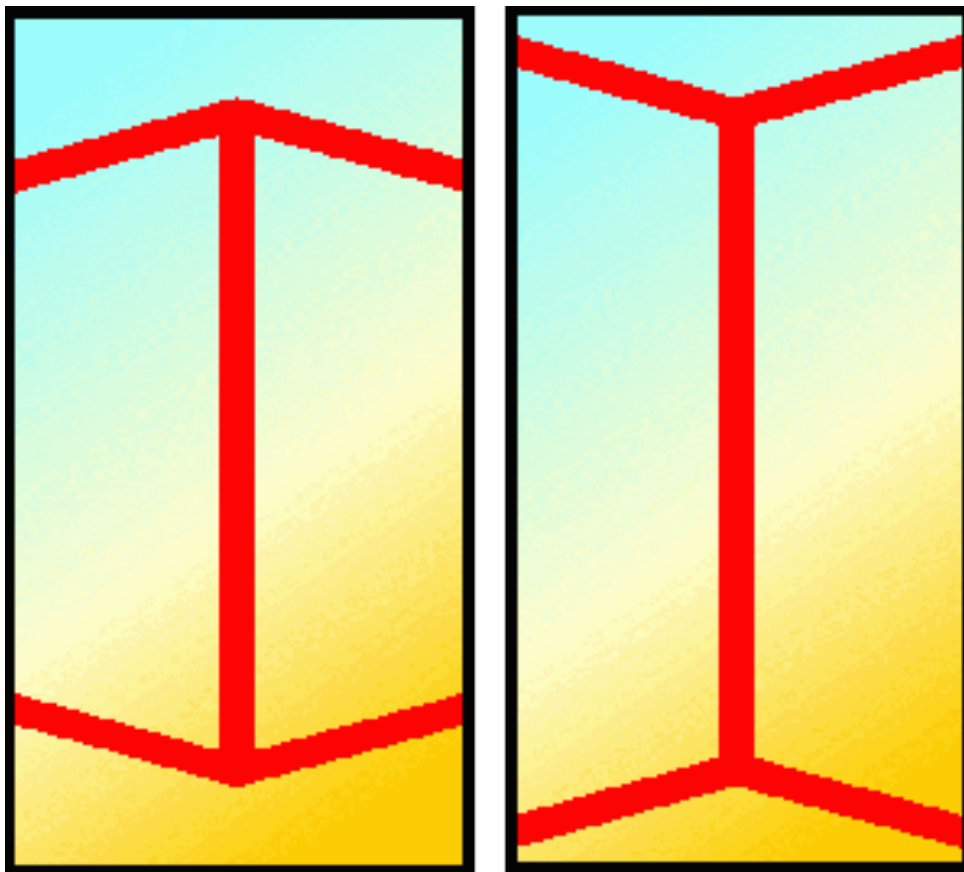
Ambiguous figures  
and illusions

Look carefully at the two pink diagonal lines. Are they the same shade of pink or are they different shades?



Look carefully, they are the same. Don't let your eyes deceive you!

Which vertical line is longer?



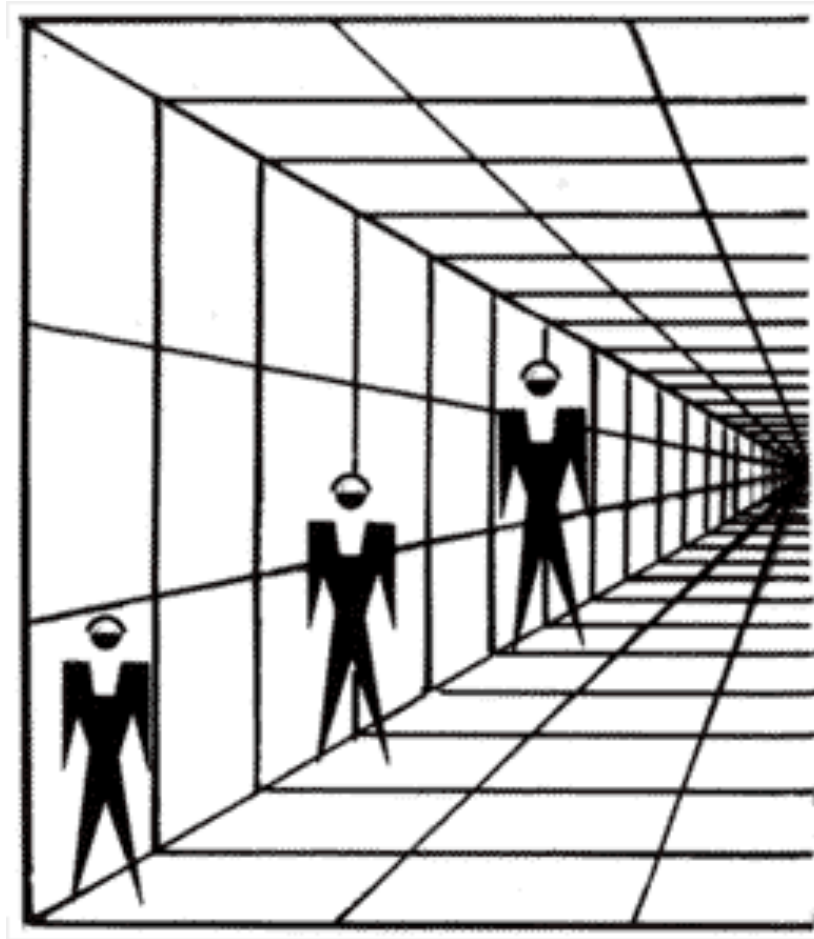
They are both the same length, actually. Measure them!

Do you see anything in this black & white image?



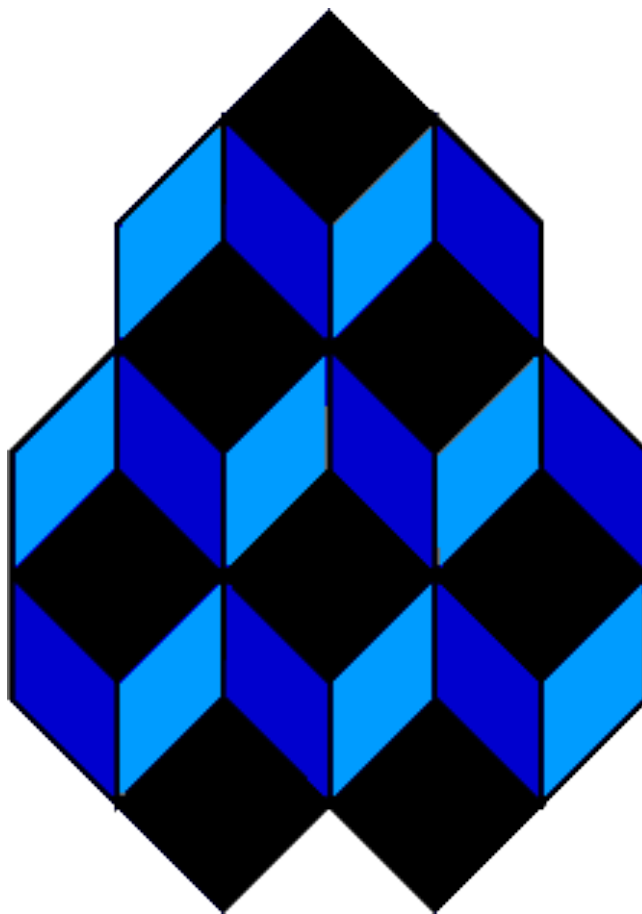
Do you see the dog?

Which man is the tallest in the picture below?



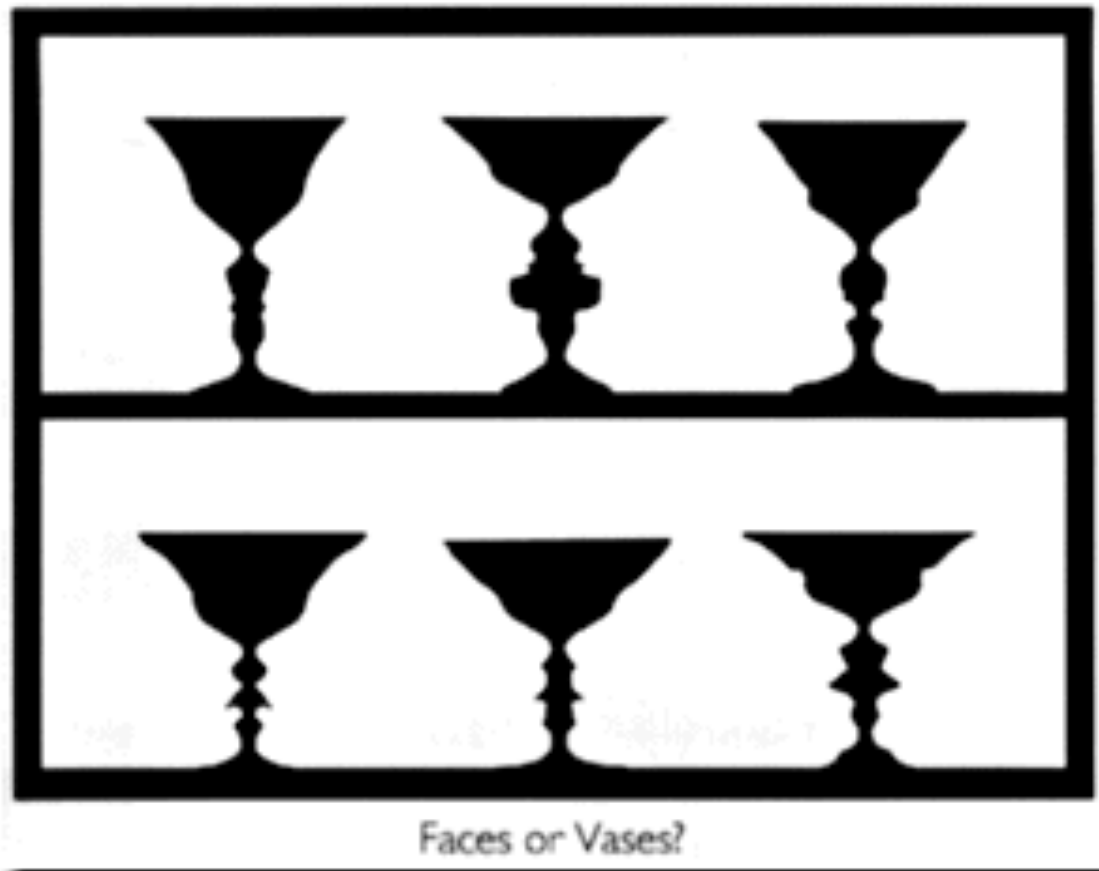
Look closer. All three are exactly the same size.

How many full cubes can you count in this pattern?



Six or seven?

What do you see?



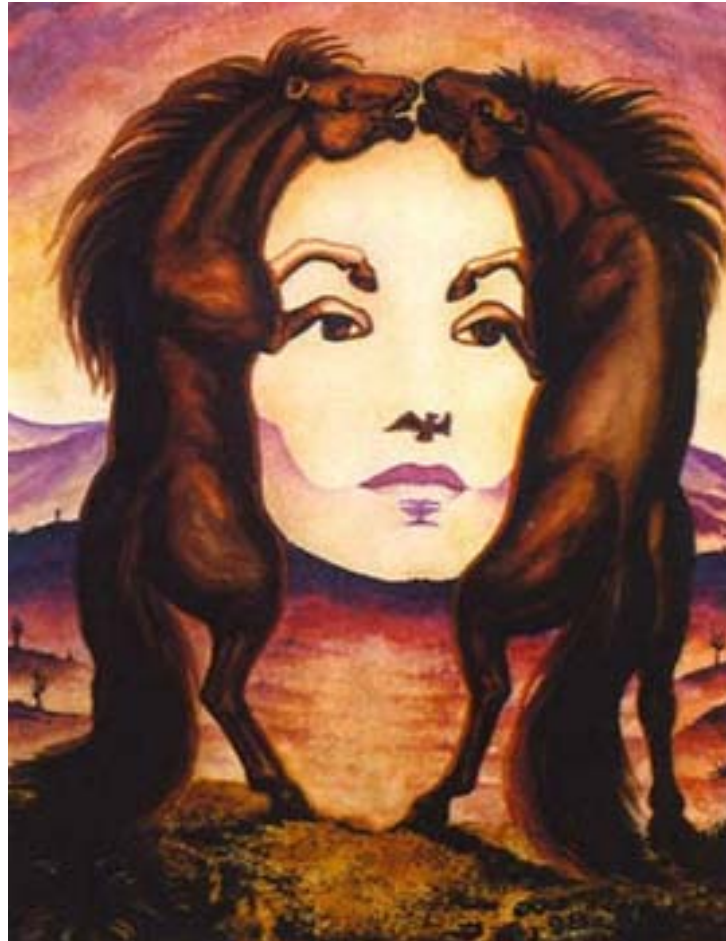
What do you see?



**flowers or face**

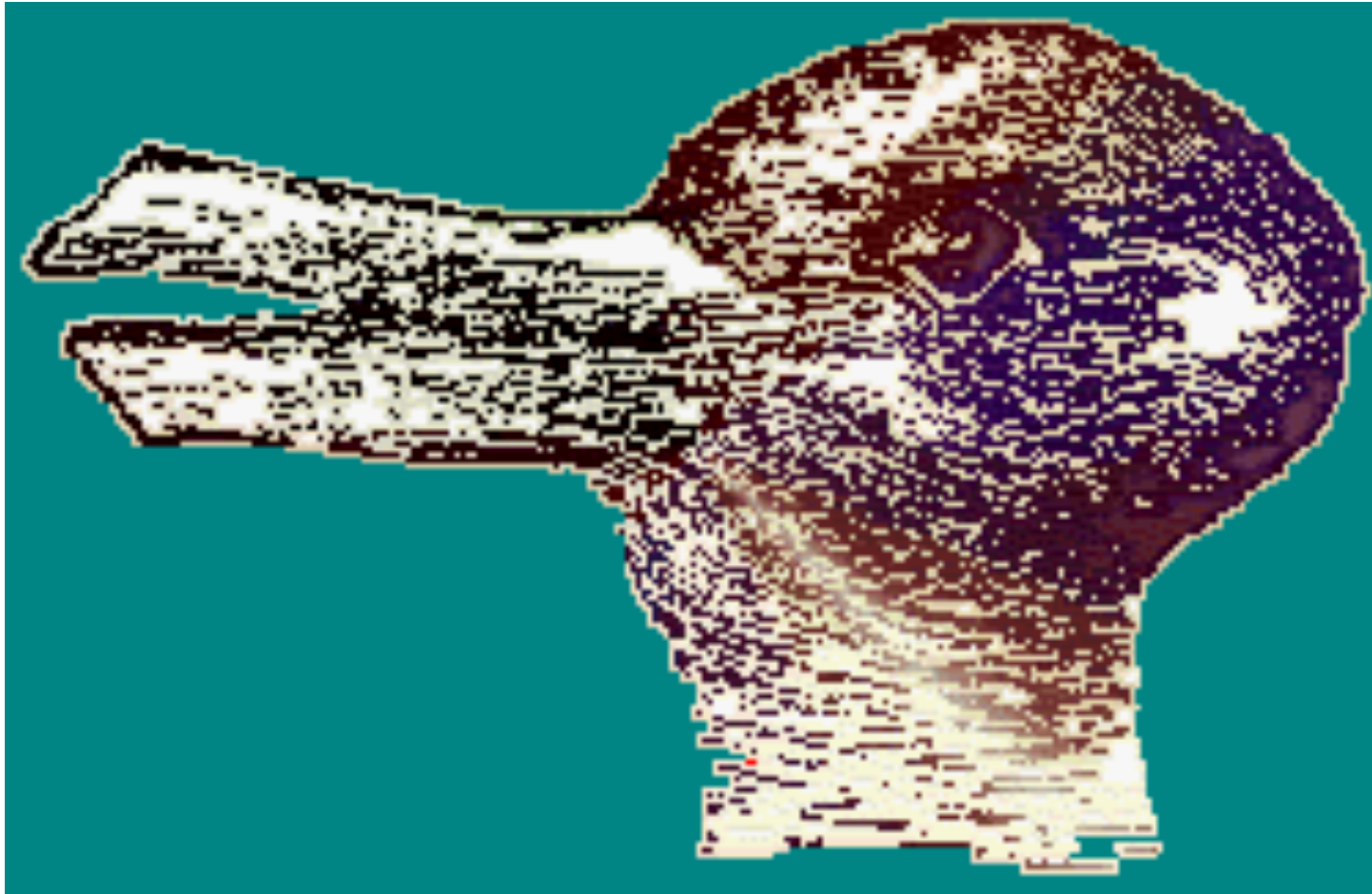


What do you see?



Horses or a face

What do you see?



A duck or a rabbit?

What do you see ?



a donkey or a seal

What do you see?



Einstein or 3 women?

What do you see?



Scenery or baby?



What can you see?



**Face or palm Sunday?**

What do you see?



An old man or two people kissing?

What do you see?



a young woman or an old woman



What do you see?



One face or two?

What do you see?



**old couple or young couple**

What do you see?



SWAN VS SQUIRREL

What do you see?



**Skull or 2 women lunching**

What do you see?



father or son

What do you see?



**soldier or bending man**

What do you see?



saxophone player or woman

What do you see?



tiger face or hand?



What do you see?



A face or the word "liar"? This clever illustration was drawn by Paul Agule.

How many faces do you see?



1 . . . 2 . . . Or 3?

What do you see?



**A frog or a horse (You will have to rotate picture to see 2<sup>nd</sup> pict)**